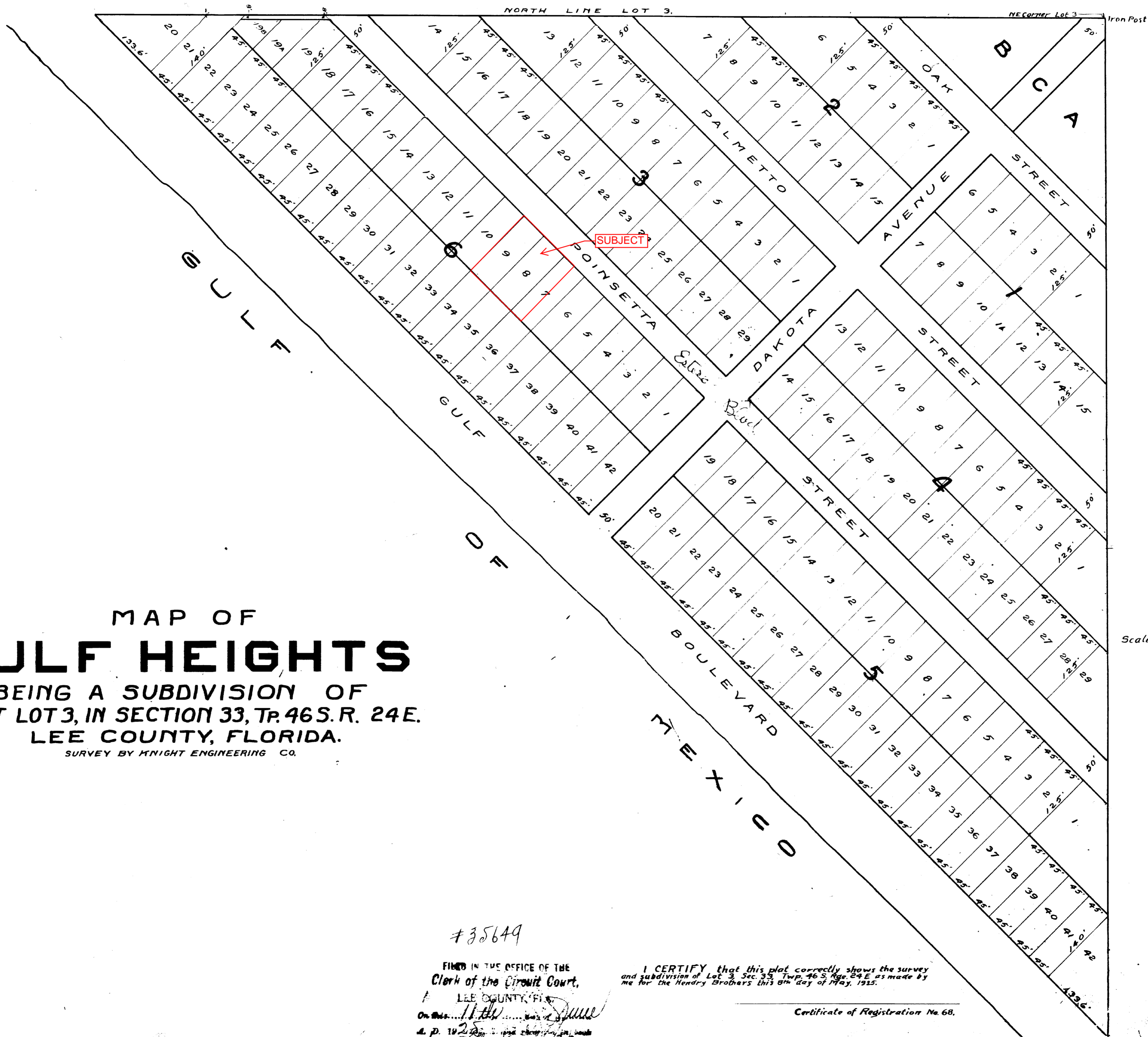


MAP OF
GULF HEIGHTS
 BEING A SUBDIVISION OF
 GOV'T LOT 3, IN SECTION 33, TR. 46 S. R. 24 E.
 LEE COUNTY, FLORIDA.
 SURVEY BY KNIGHT ENGINEERING CO.



#35649

FILED IN THE OFFICE OF THE
 Clerk of the Circuit Court,
 LEE COUNTY, FLA.

On this 11th day of June
 A. D. 1925
 J. J. Garner

I CERTIFY that this plat correctly shows the survey
 and subdivision of Lot 3, Sec. 33, Twp. 46 S, Rge. 24 E as made by
 me for the Hendry Brothers this 6th day of May, 1925.

Certificate of Registration No. 68.